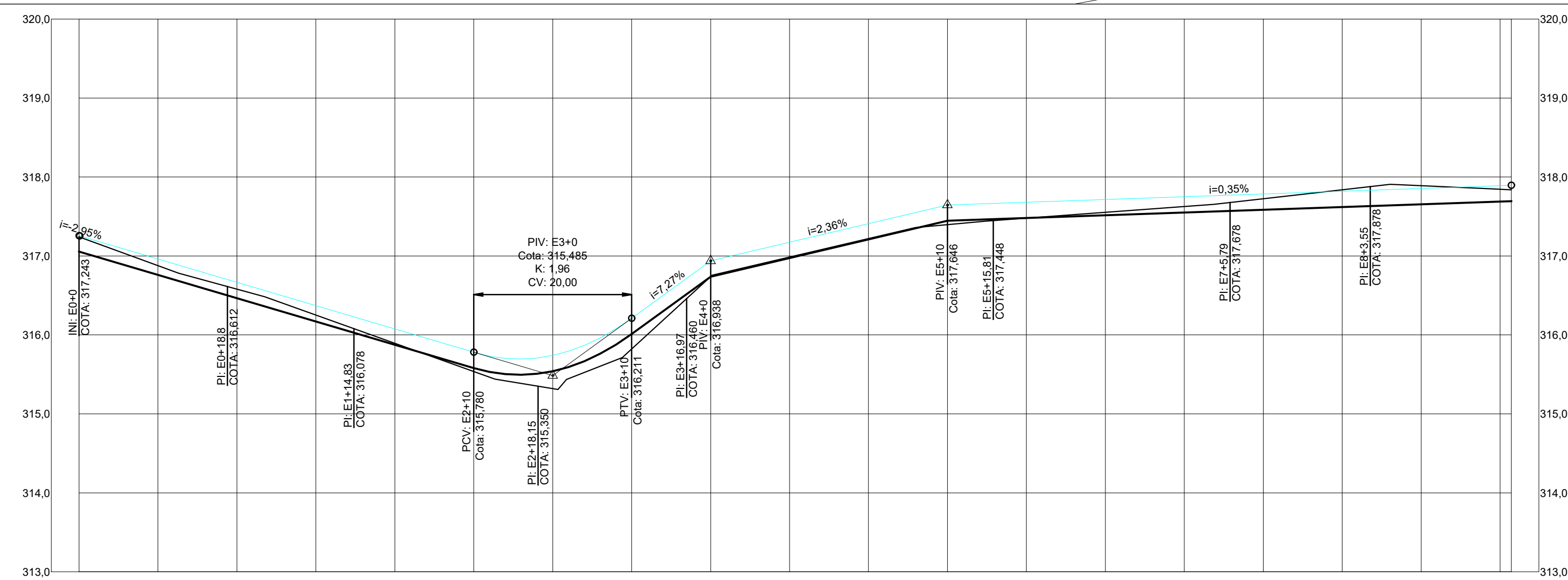
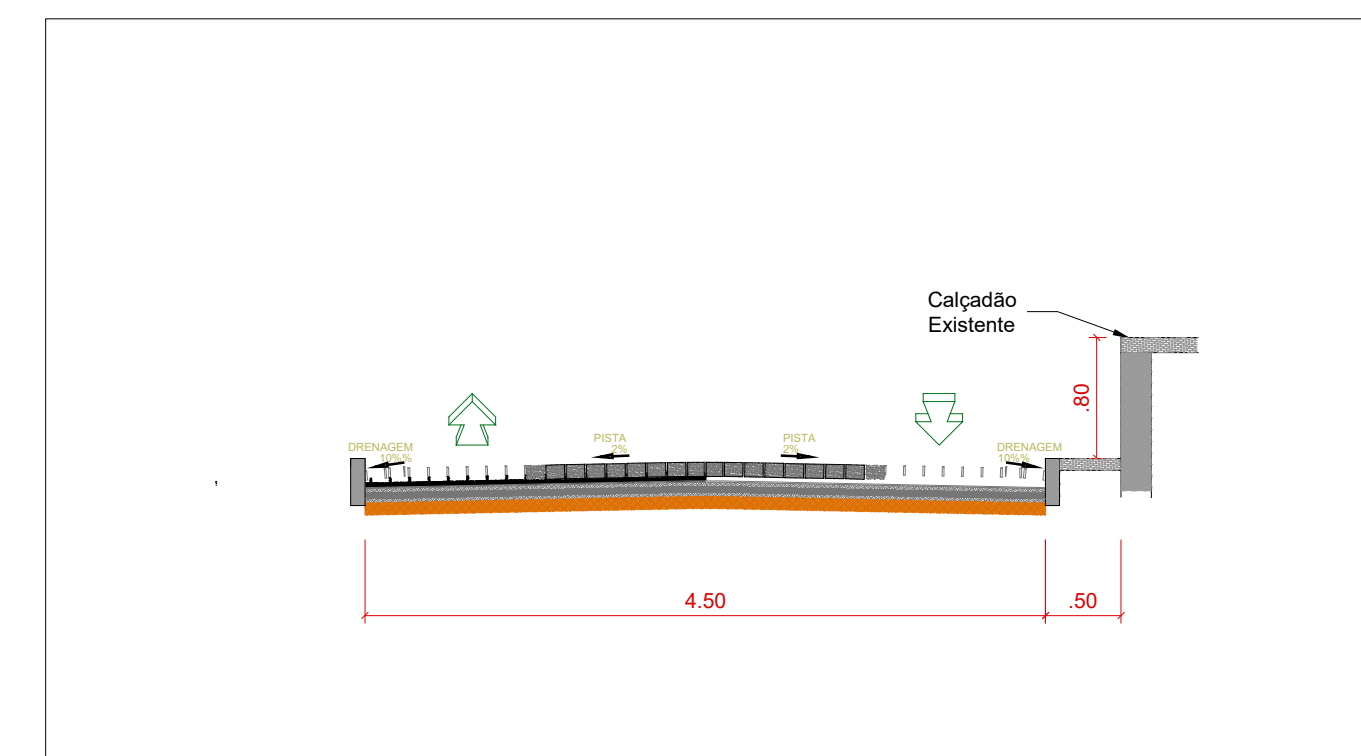


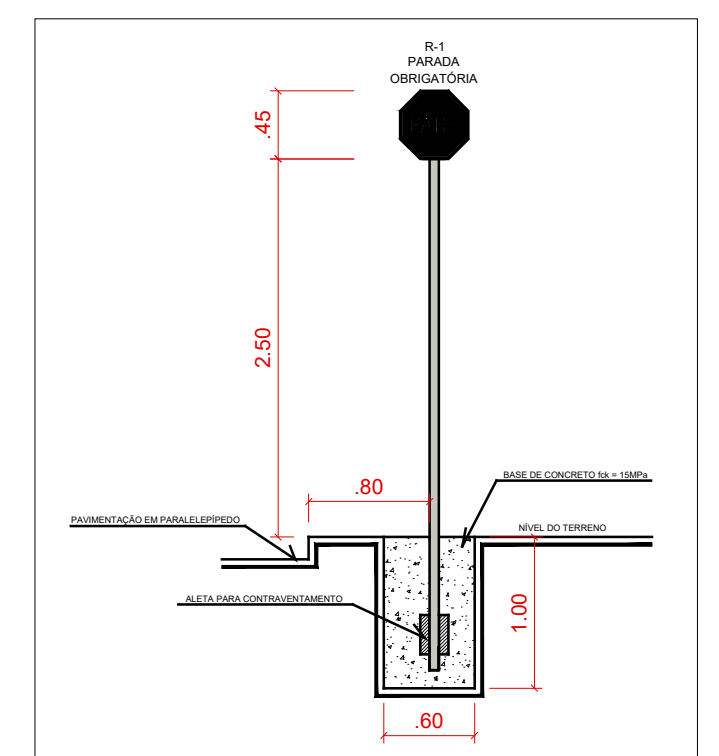
PLANTA BAIXA
Esc: 1/250



Km DESENVOLVIDO	0,00m																		181,41m
ESTACAS	E0+0	E0+10	E1+0	E1+10	E2+0	E2+10	E3+0	E3+10	E4+0	E4+10	E5+0	E5+10	E6+0	E6+10	E7+0	E7+10	E8+0	E8+10	E9+0,41
COTAS DO TERRENO	317,243	316,877	316,579	316,251	315,993	315,536	315,319	315,823	316,728	316,986	317,220	317,397	317,480	317,554	317,627	317,725	317,838	317,990	317,845 317,556
GREIDE PROJETADO	317,256	316,961	316,666	316,370	316,075	315,780	315,740	316,211	316,838	317,174	317,410	317,646	317,681	317,715	317,750	317,786	317,820	317,854	317,689 317,524

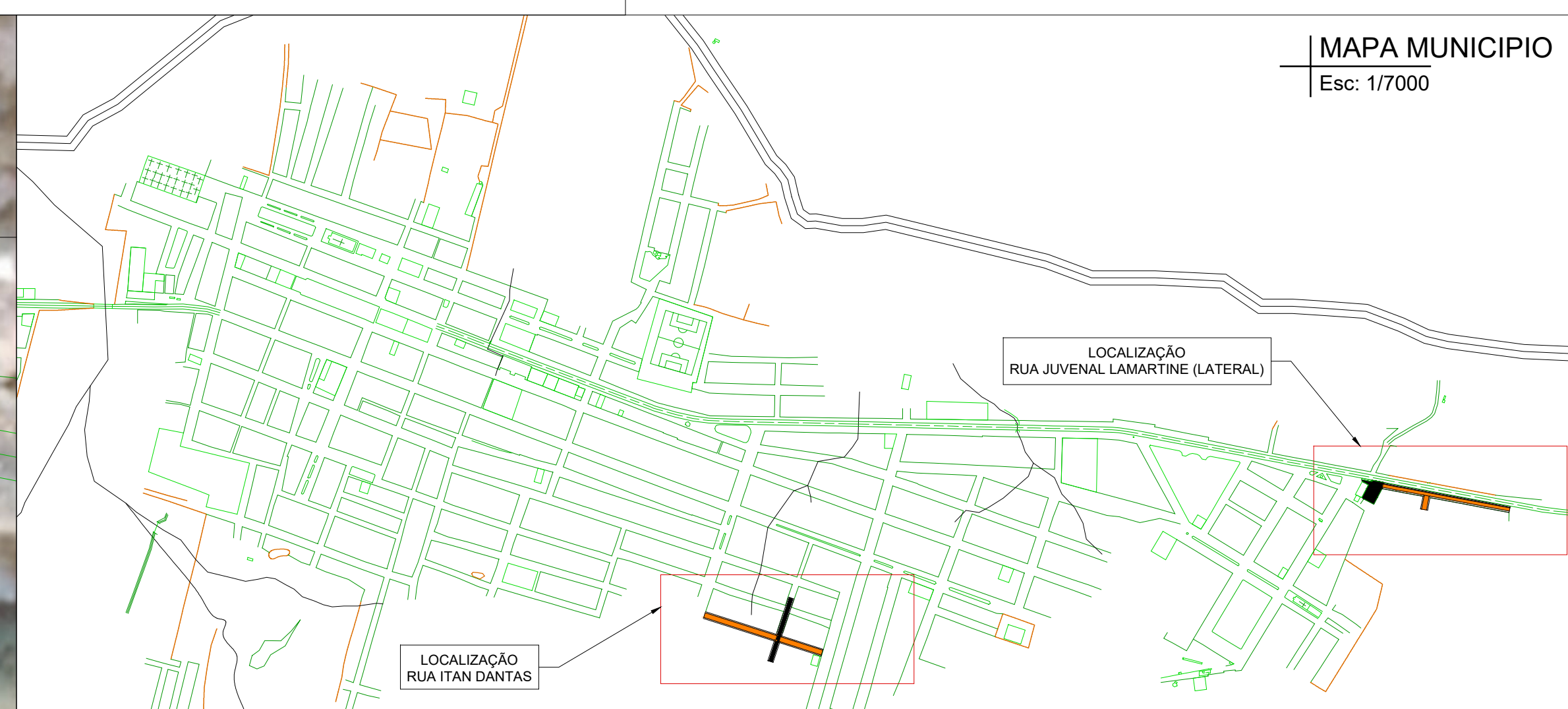


SEÇÃO RUA
Esc: 1/50

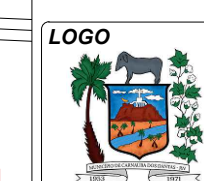


DETALHE PLACAS

Esc: 1/50



MAPA MUNICIPIO
Esc: 1/7000



<p>PROJETO</p> <p>PAVIMENTAÇÃO DAS RUAS ITAN DANTAS E JUVENAL LARMATINE (LATERAL)</p> <p>ASSUNTO DO DESENHO</p> <p>PLANTA URBANISTICA, LOCALIZAÇÃO, PERFIL LONGITUDINAL E DETALHES</p>
--

ENDEREÇO
RUA JUVENAL LAMARTINE (LATERAL), DOM JOSÉ ADELIDO, CARNAÚBA DOS DANTAS/RN

PROPRIETÁRIO(A)

PREF. MUN. CARNAÚBA DOS DANTAS

ESCALA
INDICADA

DESENHO
GDIAEL

RESPONSÁVEL TÉCNICO

GDIAEL SOUTO BARROS
2109148284

DATA
4/11/2021

FOLHA
02/04